



RICE **GROWING** **OUTLOOK** **REPORT**

JUNE 2023





Rice Growing Outlook Report

June, 2023

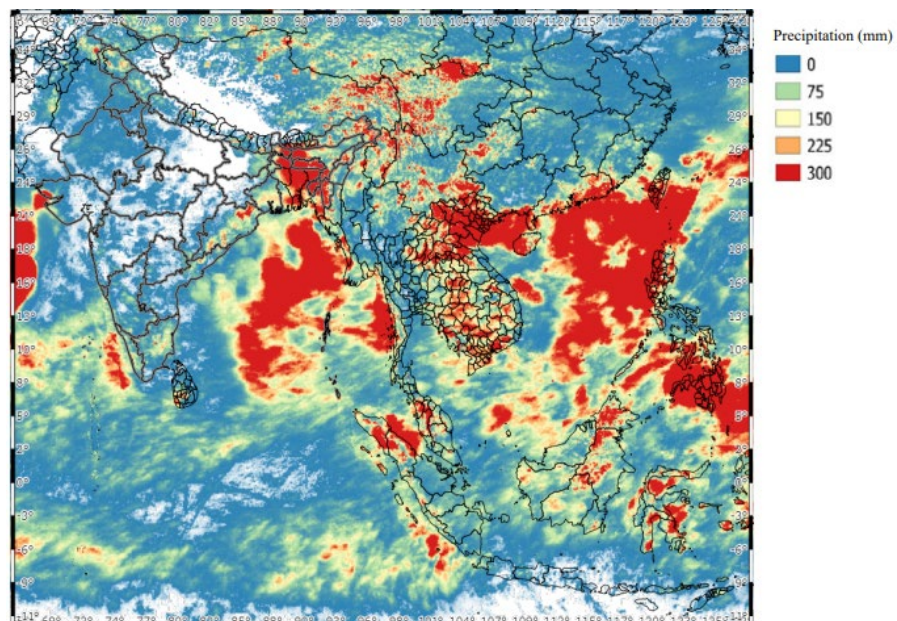
Overview

In the Northern side of SE-Asia, the cultivation of wet season rice starts in all countries and regions and the growing stage is in the seeding to young panicle forming stage. This year, the start of the rainy season is late, and the planting work is likely to be delayed. The total planted area also is forecast to decrease to last year due to agricultural water shortage and the increasing costs of agricultural materials. On the other hand, the growing condition of early stage rice is generally fair.

In the Southern side of SE-Asia (Indonesia), the harvesting of wet season rice has almost completed with 6.1 million hectares, and a good yield is expected due to good weather conditions through the growing season.

On the other hand, the dry season rice planting is progressing and the growing condition is good due to enough irrigation water.

Precipitation condition in early June



This map is provided by Indian Space Research Organisation (ISRO) under the APRSAF/SAFE agromet project

<https://www.eorc.jaxa.jp/SAFE/project/agromet>

Cambodia

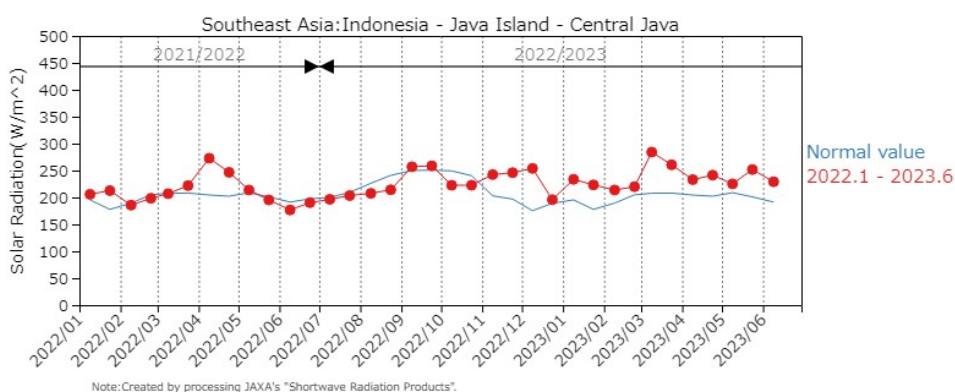
The early rice of the wet season is in tillering stage to the young panicle forming stage. The planted area reached around 1.2 million hectares, 49% of the national plan. The planted area of wet season rice slightly increased due to enough water for paddy. The weather is forecast to be slightly drought shortly in the middle of a season of this year, and it may give concern to the rice growing condition.

The current growing condition of early wet season rice is fair.

Indonesia

The wet season rice harvest is expected to be completed this month, with the total harvested being 6.1 million hectares and 1.2% lower than the last wet season. The yield is expected to be good due to enough irrigation water and sunlight during the flowering phase.

This June is also the third month of planting the dry season rice, the planted area is 2.9 million hectares and 8.4% higher than the last dry season. The growing condition of dry season rice is good due to enough irrigation water, especially in the northern part. Although the rainfall condition varies from region to region, no damage has been reported.



JASMAI Solar Radiation Graph (Central Java): The yield is expected to be good due to sunlight during the flowering phase

Laos

The wet season of lowland rice is in the land preparation and seeding stage. The national planting plan this year is approximately 736 thousand hectares with a slight increase from the previous year, and the production is expected over around 3 million tons. The planting work completed approximately 350 thousand hectares so far. The weather condition and irrigation water supply in this month is good for the paddy growing in the early stage due to proper rainfall across the country.

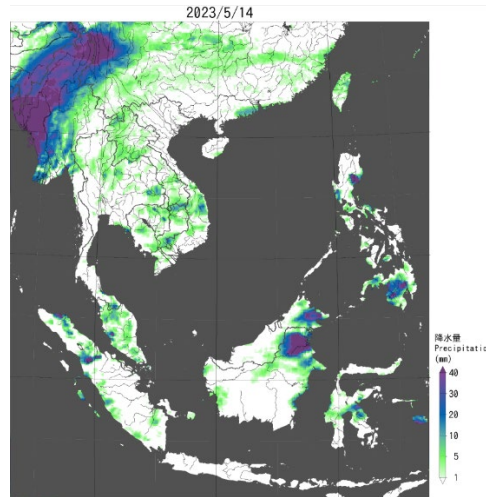
On the other hand, the planting plan for upland rice is approximately 87 thousand hectares with the expected production around 178 thousand tons.

Myanmar

Up to this month, the harvest of dry season rice is approximately 80% of the total planted area (1.05 million hectares) completed with 837 thousand hectares accounting. It produced about 4.2 million tons of paddy, and the yield is 4.99 tons per hectare. It is a good yield and still higher than last year.

Severely cyclonic storm MOCHA passed the Rakhine coastal areas on the 14th of May 2023, causing losses and damages. Therefore, 1650 hectares of dry season rice were damaged. Afterward, the weather of this month reflects the monsoon rain frequently together with strong wind.

The national plan for the planting area of wet season rice this year is set as 6.07 million hectares. The planting of the wet season rice has started with over 150 thousand hectares accounting for 2.5% of the national plan. The planting of the wet season rice is slightly slower than last year due to less availability of irrigation water, but it's not a big problem.



JASMAI May 14th,2023 Daily Precipitation Map: Severely cyclonic storm MOCHA passed the Rakhine coastal areas

Philippines

Wet season rice planted in April to May is in the tillering to young panicle forming stage. During the last week of May, super typhoon “Betty” just passed the country, but it did not make landfall. The said super typhoon enhanced the southwest monsoon which brought heavy rains in some areas of western Luzon and Visayas that caused landslides and floods but there was no crop damage reported in these areas.

Generally, a better outlook on the crop growing condition of wet season rice is observed in most provinces of the country. Near-normal to above-normal rainfall conditions are more likely to experience in some parts of the country for the remainder of the month.

Thailand

Wet season rice is in the sowing and early tillering stage. This year's rainy season came later than normal year. The total planting area is forecast to decrease due to less agricultural water, and the price of fertilizer, pesticides, and fuel is still high. Some farmers change their planting crops to other crops such as cassava and sugarcane from paddy rice, which can get a higher income. The paddy yield is predicted to decrease because of drought, reduced fertilizer usage, and a high risk of damage from diseases and pests. As a result, total production is expected to reduce than last year.

Vietnam

In the North, the winter-spring rice (dry season rice) is in the harvesting stage with an area of 0.372 million hectares. The yield is estimated at about 6.33 tons per hectare, 0.7% higher than the last year due to favorable weather and better irrigation preparation. In addition, the sowing of summer-autumn rice (wet season rice) started, but the precipitation is still low level.

In the South, the summer-autumn rice (wet season rice) is in the seeding and tillering stages. The current sown area has reached 1.14 million hectares. The rice growing condition is normal under proper rainfall conditions.